



THAINSTONE  
— LEISURE CLUB —

MEMBERSHIP



# WELCOME

Thainstone Leisure Club has a bright and airy indoor pool, a steam room, outdoor hot tub and oak barrel sauna, plus a well-equipped gym.

There's also space to relax with magazines and chilled water before or after a spa treatment in the club's comfortable seating area.



- Indoor heated swimming pool
- Pool side Jacuzzi
- Indoor steam room and sauna
- Two spa therapy rooms
- Relaxation room
- Outdoor hot tub and oak barrel sauna
- Air-conditioned, state-of-the-art gymnasium with air resistance equipment and cardio theatre
- Downloadable fitness app to monitor gym programs and progression
- Changing rooms with private cubicles and lockers
- Seating area
- Car parking
- Free WiFi

[WWW.CRERARHOTELS.COM/THAINSTONEHOUSE](http://WWW.CRERARHOTELS.COM/THAINSTONEHOUSE)

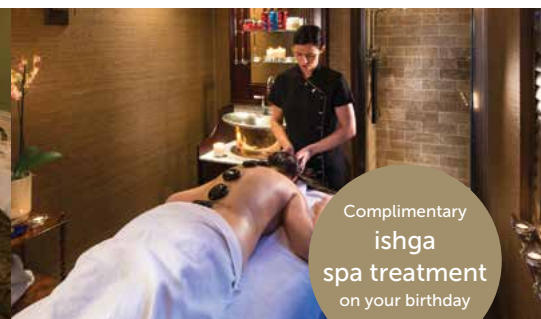
# CLUB & SPA ANNUAL MEMBERSHIP & BENEFITS

TYPE	SINGLE PAYMENT	DIRECT DEBIT	
		MONTHLY	ANNUAL
Single	£660	£60	£720
Joint	£1,210	£110	£1,320

Joining fee - £25. Corporate membership available by negotiation. Membership card required for admittance.

**OPENING TIMES: 6.00am to 9.30pm - 7 days**

Opening hours may be reduced on bank holidays and during the festive period.



Complimentary  
ishga  
spa treatment  
on your birthday

## MEMBERSHIP BENEFITS

- 20% off food in Thainstone House
- 20% off spa treatments
- 20% off best available room rate
- Exclusive members' social events

T&C's: Complimentary ishga treatment is non-transferable. Discounts apply where members are staying or dining.  
Dining 20% discount applies to up to four guests, over four guests a 10% discount will be applied.  
Children under 14 are permitted as paid guests during the following hours 9.30am - 11.30am & 4pm - 6pm.



# THAINSTONE

LEISURE CLUB

## TERMS & CONDITIONS

1. Membership subscription shall be fixed by Crerar Hotel Group Ltd (CHG) and shall be payable in advance. CHG may vary the subscription from time to time for memberships. All members shall be notified of any variations in their subscription prior to the date of their renewal. Membership is not transferable.
2. Members must produce their membership card on every visit to the leisure club. The named person only may use the membership card.
3. Any guests of members will be charged the day membership at the current rate. The fee is payable prior to arrival for each guest.
4. A member is entitled to use the facility of the club during the stipulated opening hours.
5. The club may withdraw all or any part of the leisure club facilities for any period of time in connection with repair, alteration and maintenance work or water impurities.
6. The club reserves the right to refuse admission and/or cancel membership if any member shall, in the opinion of the club, cause a nuisance or annoyance to other users of the club.
7. Gym users must be aged 16 or over.
8. Children under 16 may only use the leisure club facilities if accompanied by an adult. They are at all times the responsibility of that person with whom they are accompanied. A maximum of two children are allowed with any one adult in the swimming pool. Children must be accompanied in the pool at all times. We do not recommend children under 8, for their own health and safety, using the Jacuzzis, steam room or sauna. Children under 14 are permitted as paid guests during the following hours 9.30-11.30 & 16.00 – 18.00
9. Members will be required to comply with directions from the leisure club staff to ensure a smooth operation of the club.
10. All members must complete the confidential health questionnaire before they can use the facilities in the club.
11. Cancellation of direct debits require a notice period of 90 days, otherwise an additional month's payment will be taken.
12. It is the responsibility of all members to inform the club of any change in the information provided, both for the confidential health form or personal details. This ensures the club's records are kept up to date and your safety maintained.
13. No smoking is permitted anywhere within the club.
14. The consumption of own food or drinks is not permitted within the club's facilities.
15. Guests using the swimming pool do so at their own risk as the pool is unsupervised.
16. In the interest of hygiene all members must shower prior to entering the pool, sauna, steam room, Jacuzzi or hot tub.
17. To allow the Jacuzzi to re-chlorinate members must evacuate the Jacuzzi when the water is not in circulation.
18. Entry to the facilities is restricted to a maximum of 60 members at any one time. Should the facility become busy, sessions can, at the discretion of the management, be amended.
19. Members must observe all safety signs and strictly adhere to them.
20. Members must not dine prior to entering the facilities. It is strongly recommended that an elapsed time of 90 minutes be taken before entering the club after any meal.
21. Members must ensure that no portable electrical equipment is taken into the pool area.
22. On hearing the fire alarm or panic alarm members must evacuate the pool and leave the building by the nearest fire exit. Staff on duty will assist with the evacuation. You are asked to assemble at the front of the hotel. Tinfoil blankets will be issued to those evacuating the pool.
23. In the interest of safety members must not bring glass items into the leisure club.
24. The management are not responsible for the loss or damage to any personal property or clothing.
25. Any persons who are, or the management believe to be, under the influence of alcohol will be refused admission to the leisure club.
26. All persons using the facilities must read these terms and conditions prior to use.
27. Complimentary birthday ishga treatment is non-transferable



# THAINSTONE HOUSE

— INVERURIE —

ABERDEENSHIRE AB51 5NT

01467 621 643

[LEISURE.THAINSTONE@CRERARHOTELS.COM](mailto:LEISURE.THAINSTONE@CRERARHOTELS.COM)

[WWW.CRERARHOTELS.COM/THAINSTONEHOUSE](http://WWW.CRERARHOTELS.COM/THAINSTONEHOUSE)